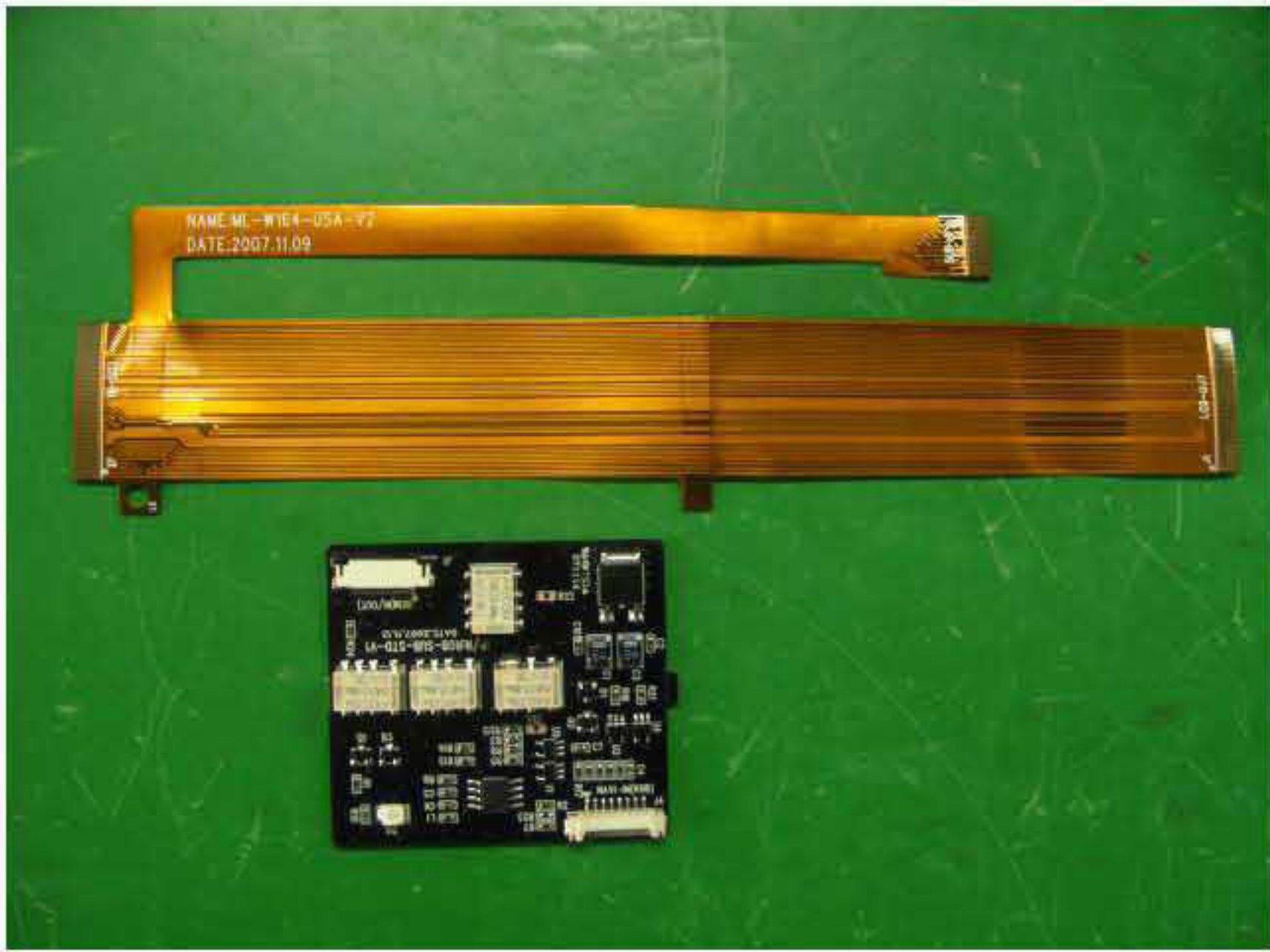


Installation guide for BENZ ML Class (W164) U.S

- *High quality*
- *Higher reliability, stability*
- *Simple assembly*
- *Custom design service*

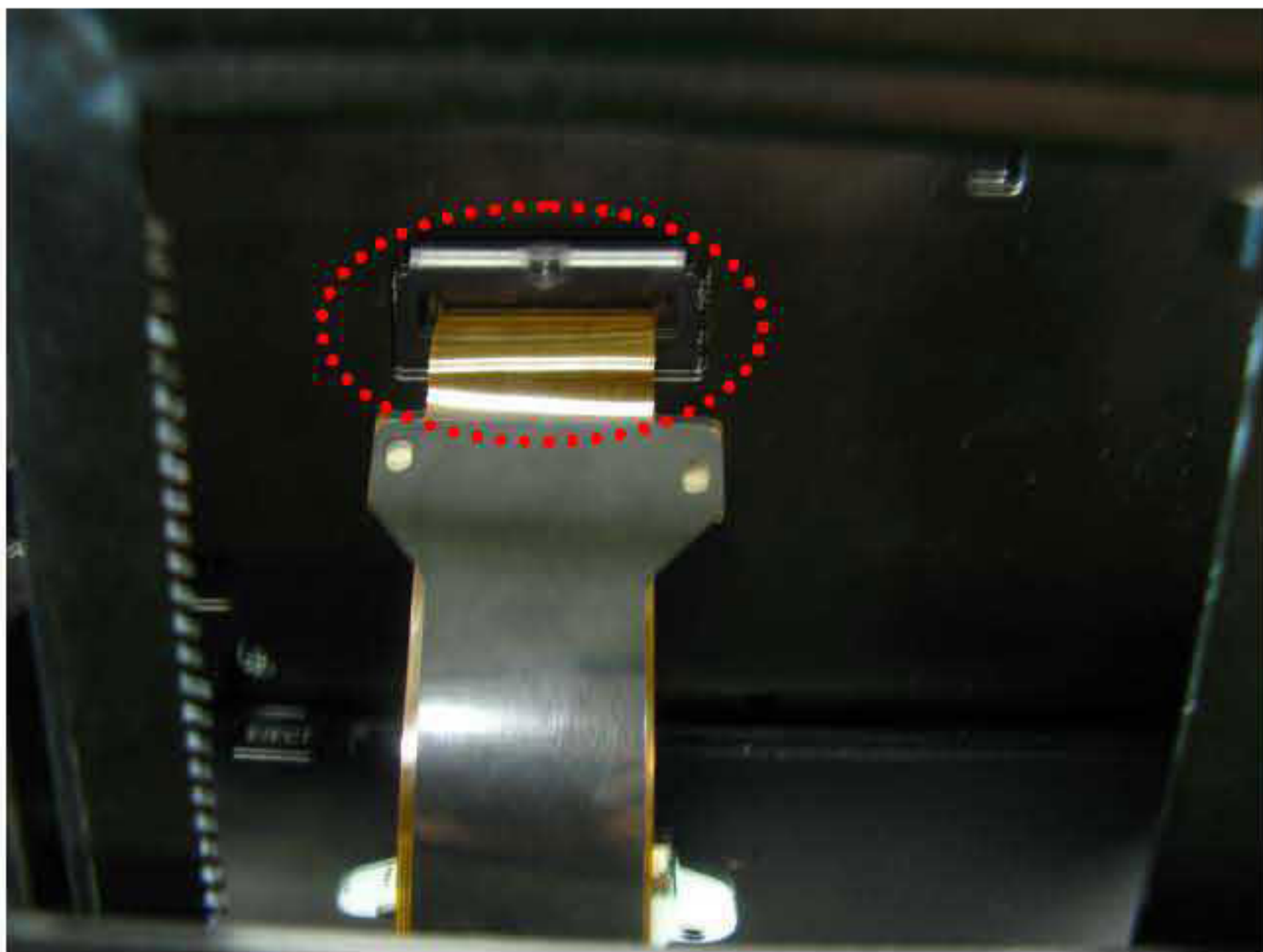




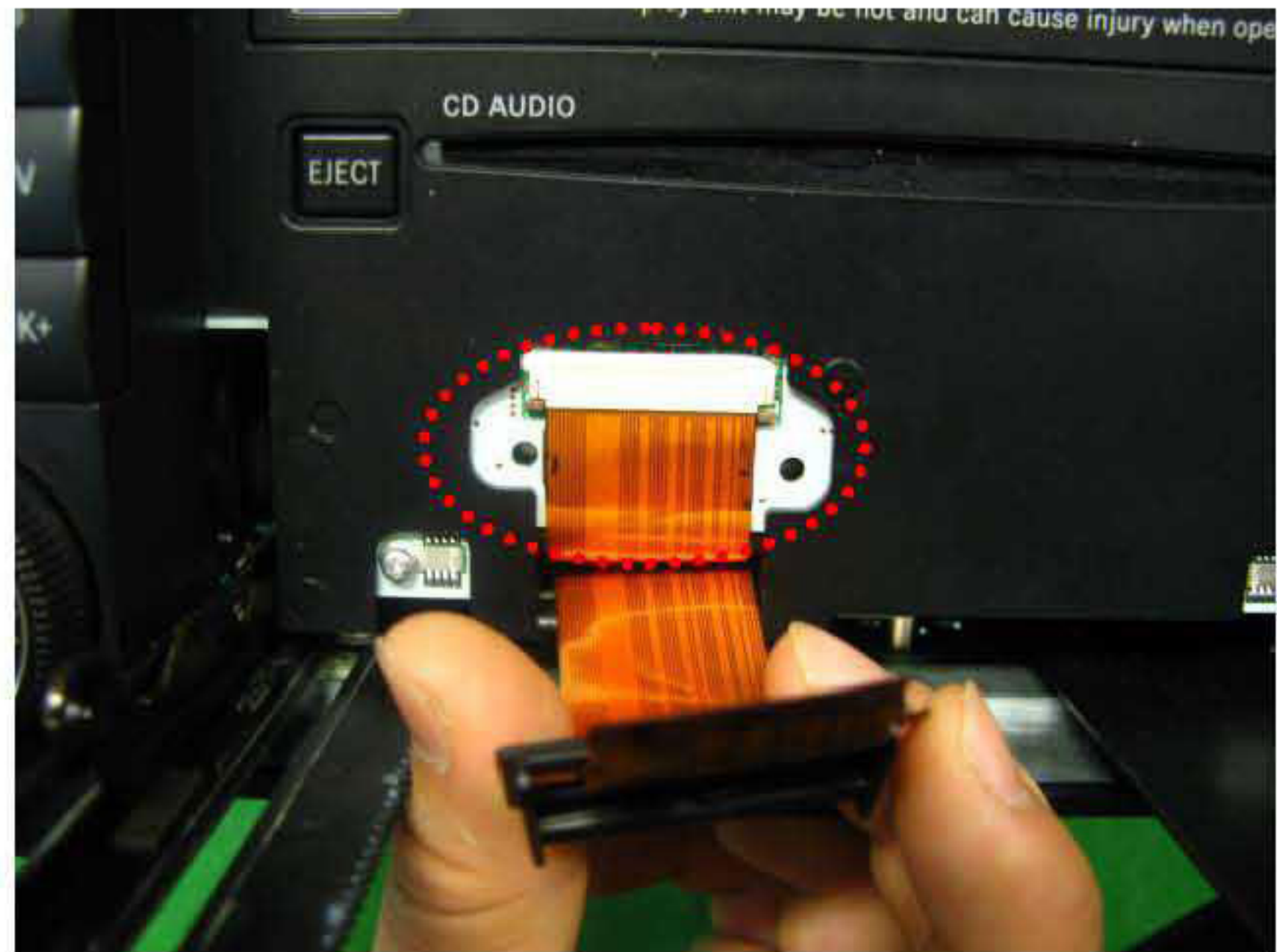
Sub-Board, FPC Cable



Step 1 : Unscrew screws marked on the pic with proper tools from the HU (Head Unit)



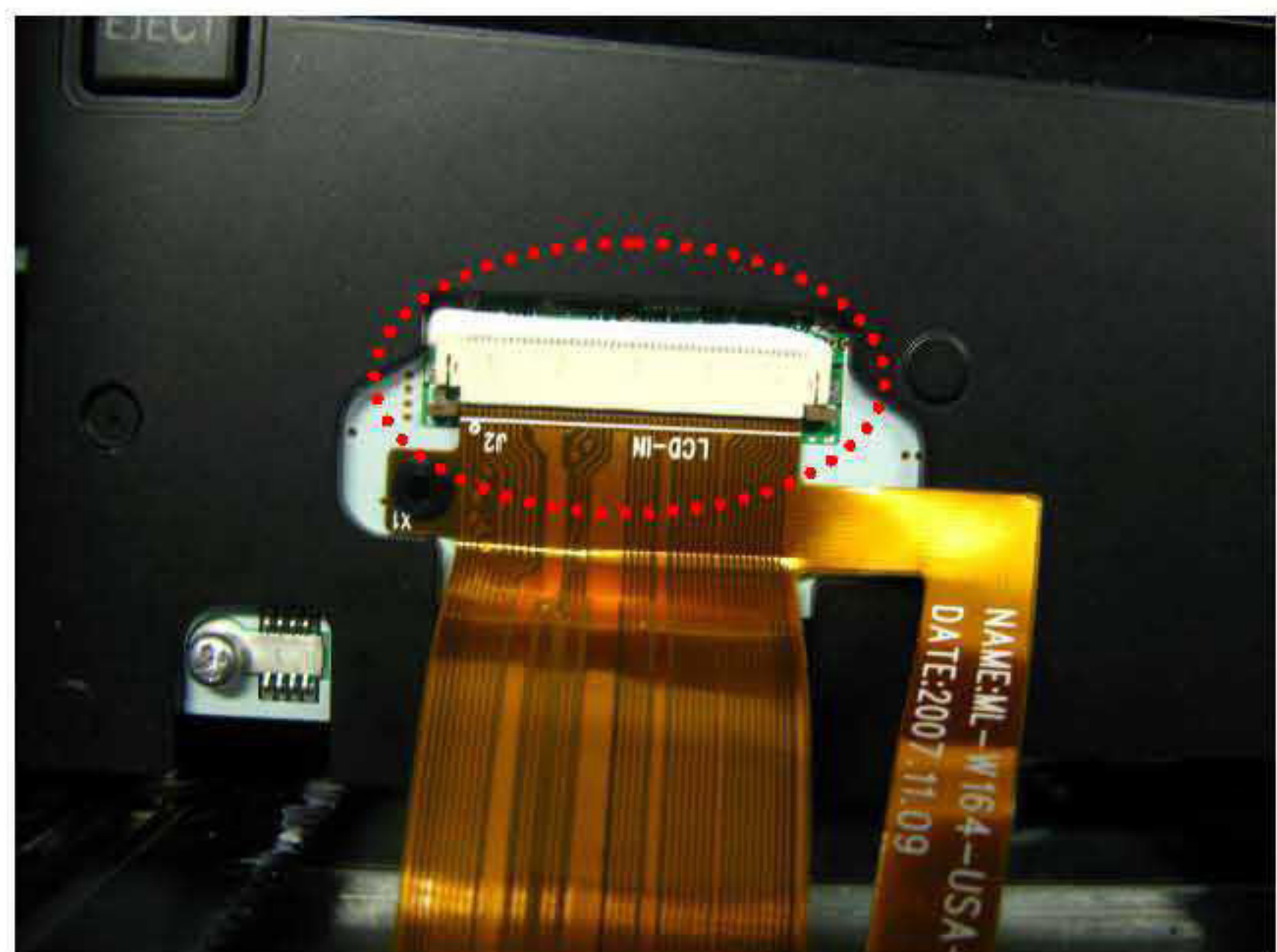
Step 2 : Take apart the original FPC cable from HU



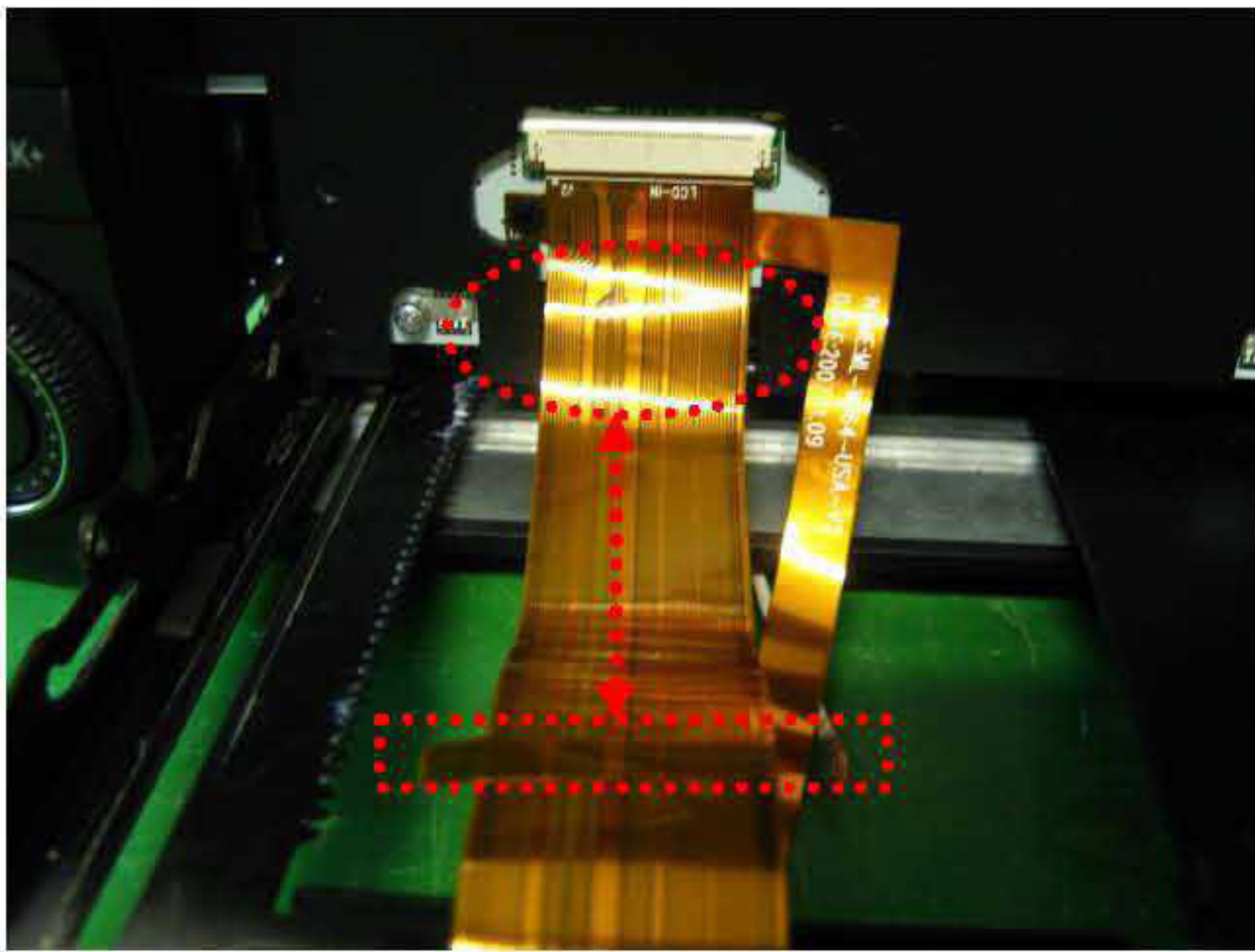
Step 2 : Take apart the original FPC cable from HU



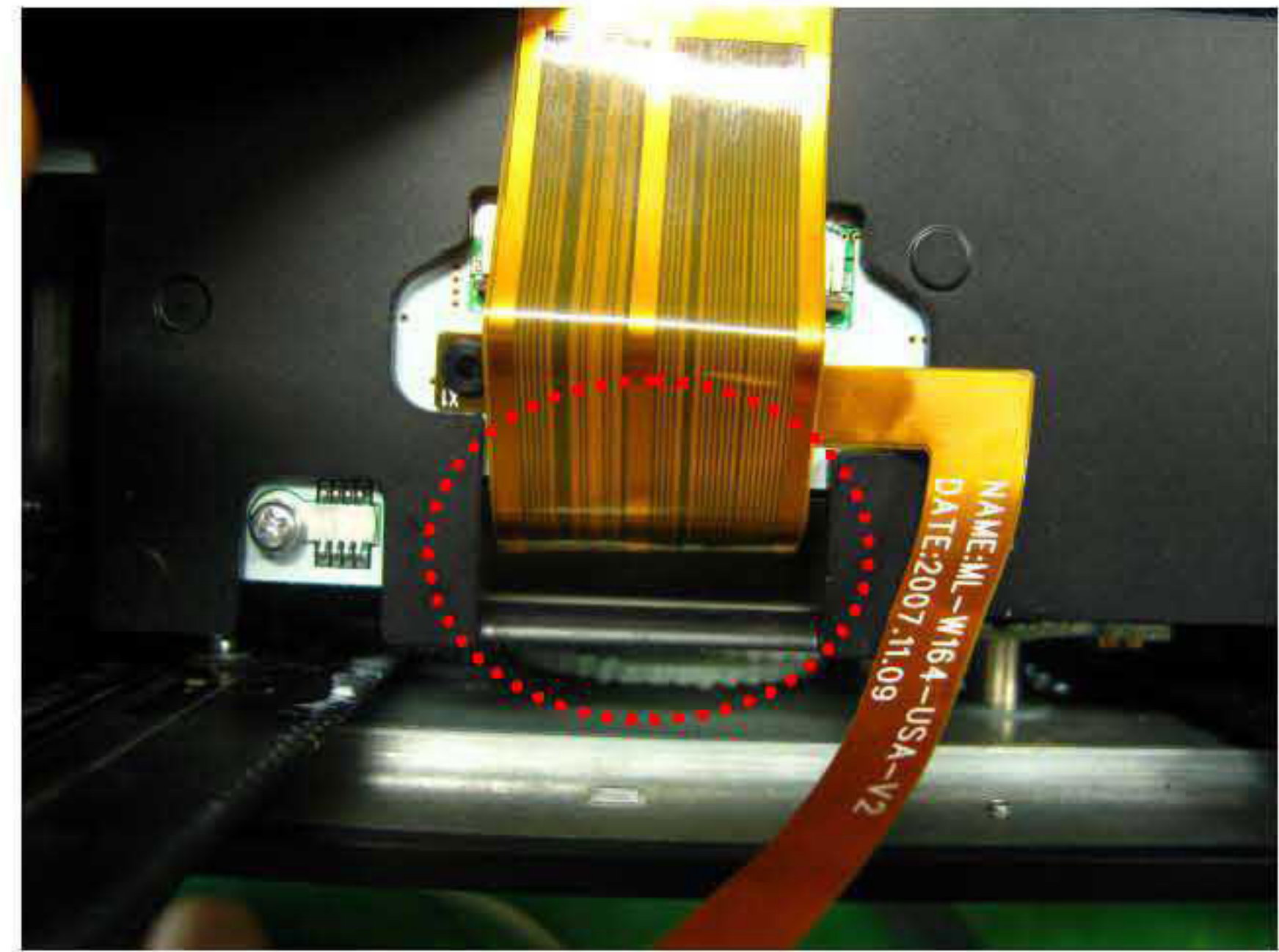
Step 2 : Take apart the original FPC cable from HU



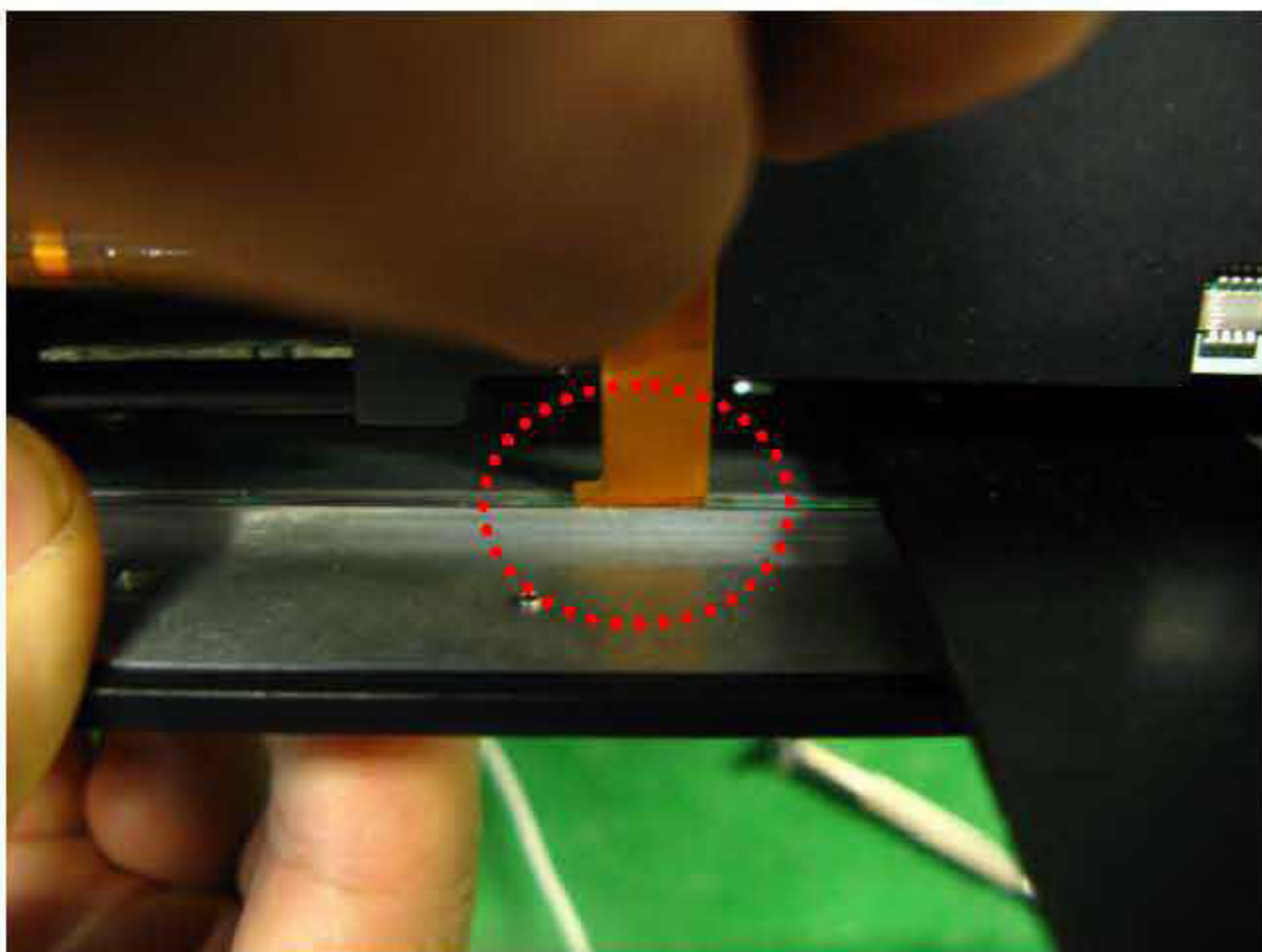
Step 3 : Connect the offered FPC cable to the connector of HU



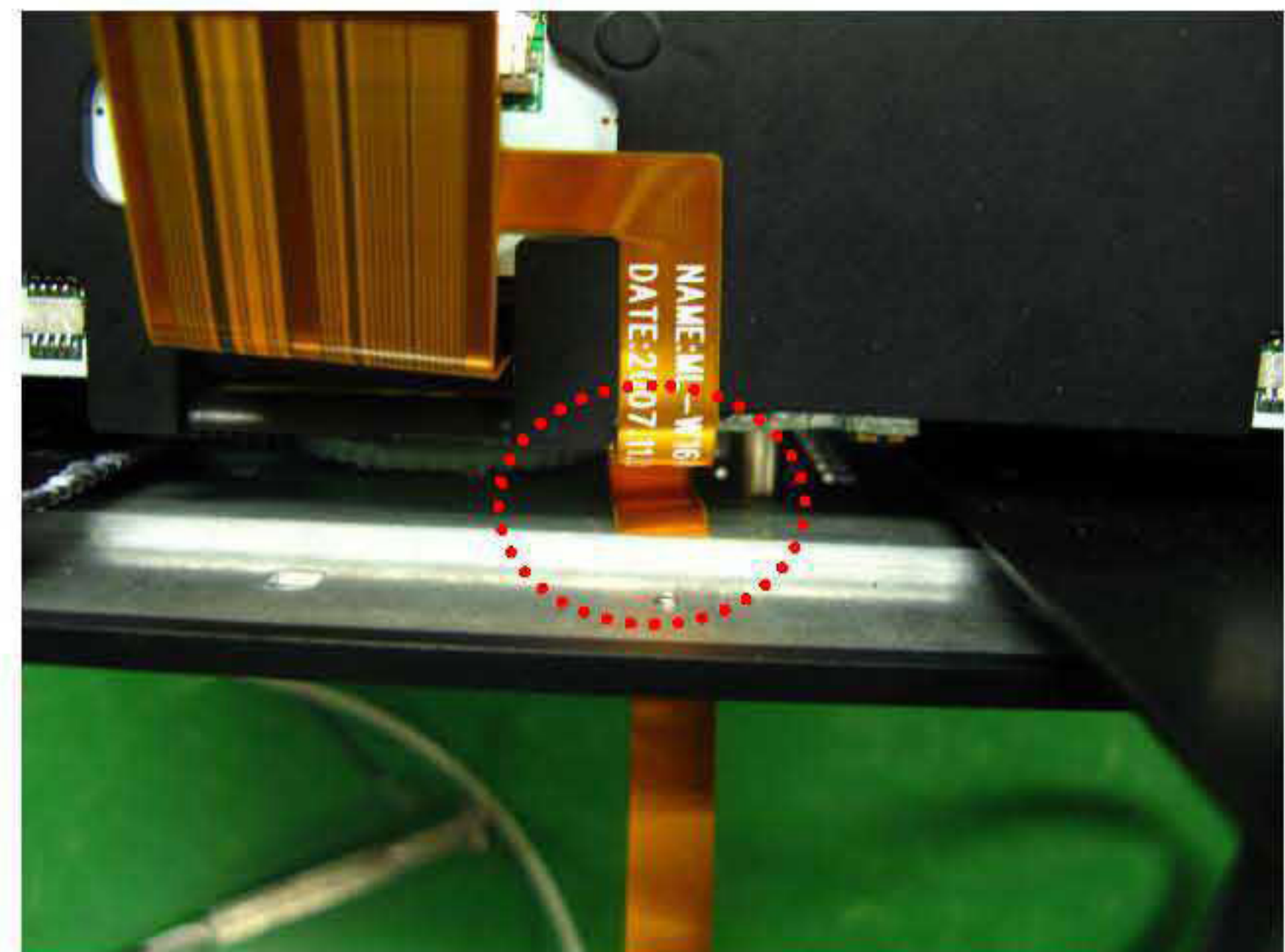
Step 4 : Put the FPC cable into empty space of back side up to □ marked part like the above picture.



State of the FPC cable put into hole of HU.



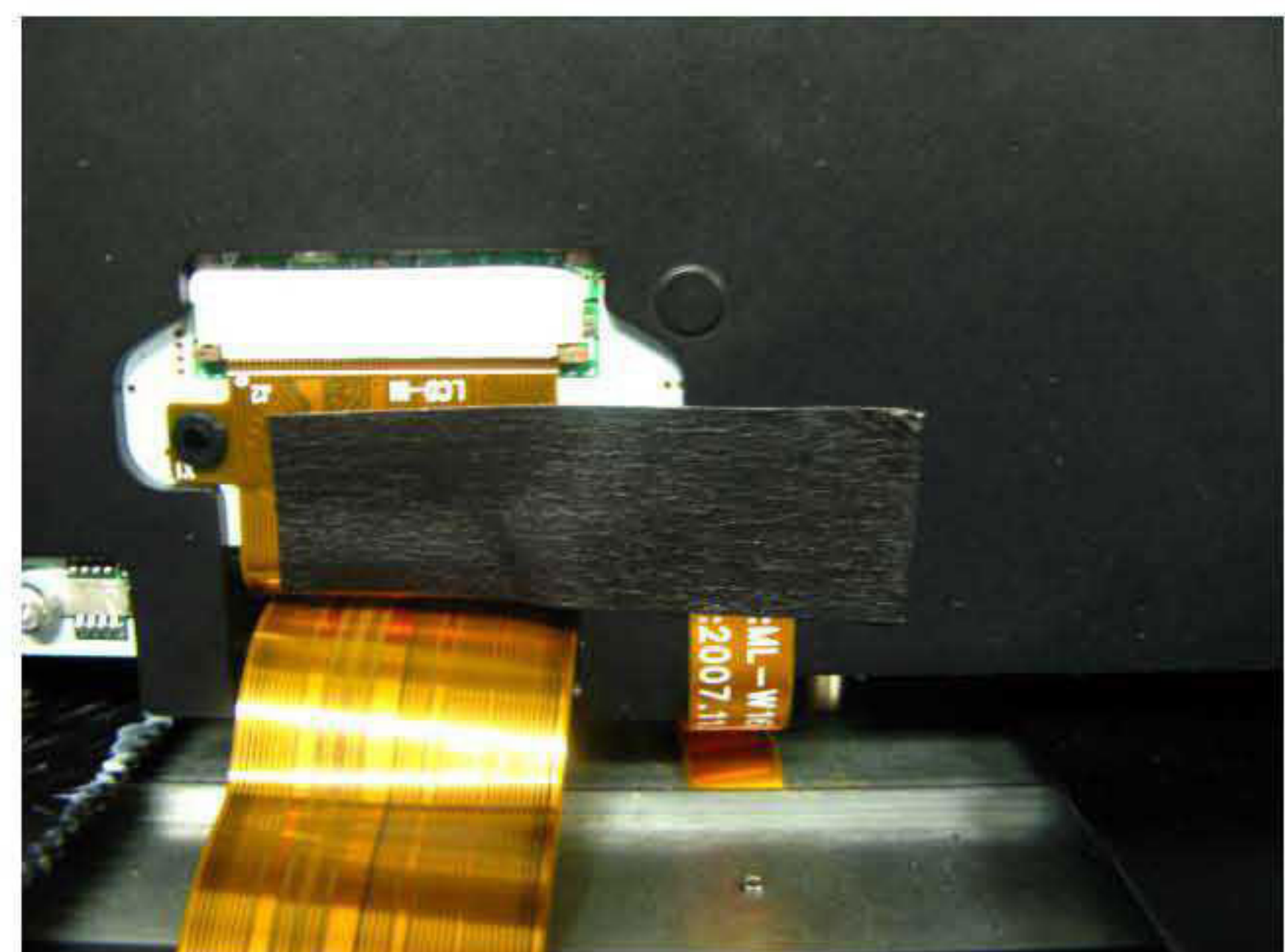
Step 5 : Take the small cable out to empty space like the above picture.



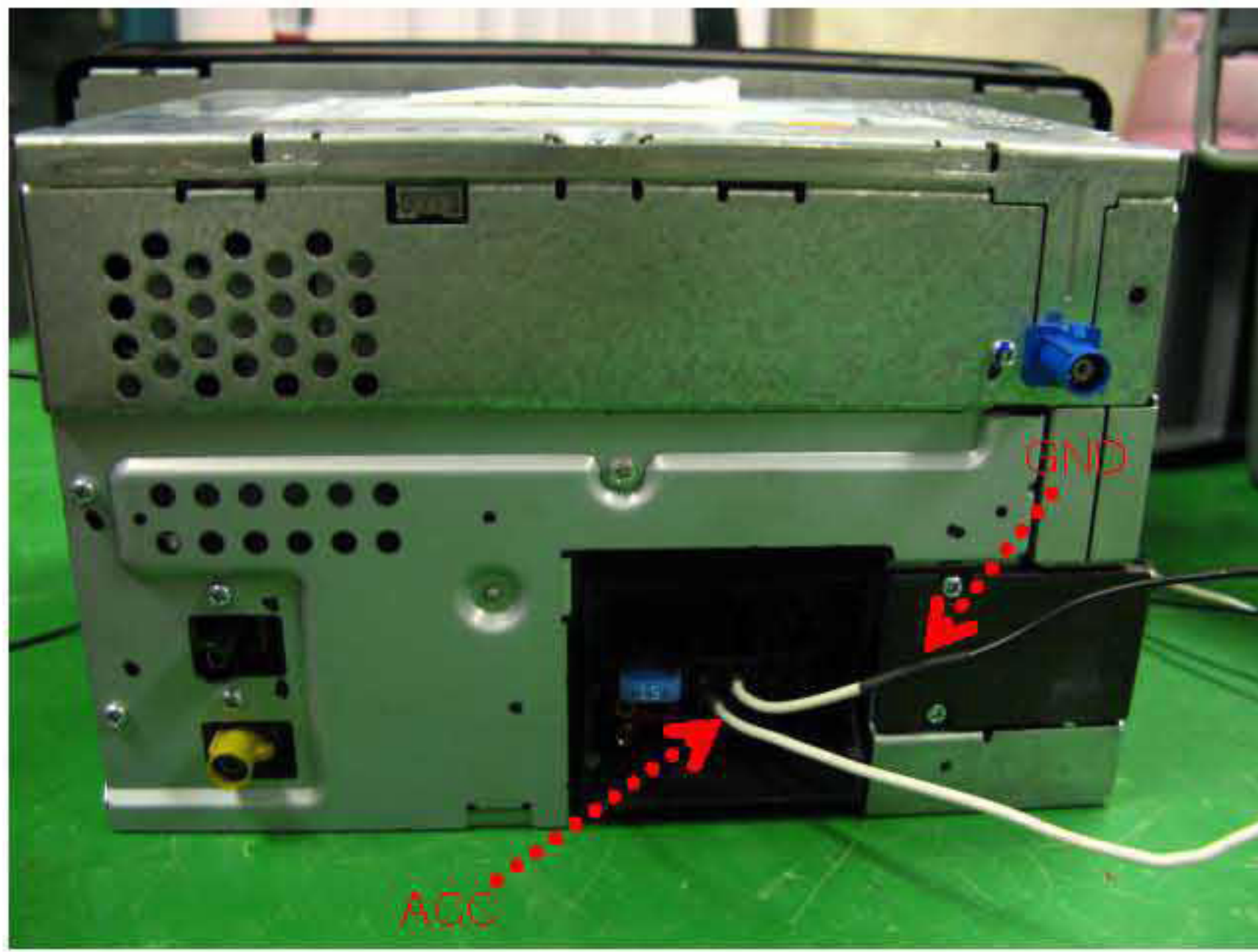
Step 6 : Put the small cable into empty space like the above picture.



Step 7 : Connect the small cable taken out to the daughter board and fix it on the bottom of HU.



Step 8 : Fix the cable with tape to protect the cable.



Power connection



12th Pin : GND, 15th Pin : 12V of connector



Completion