

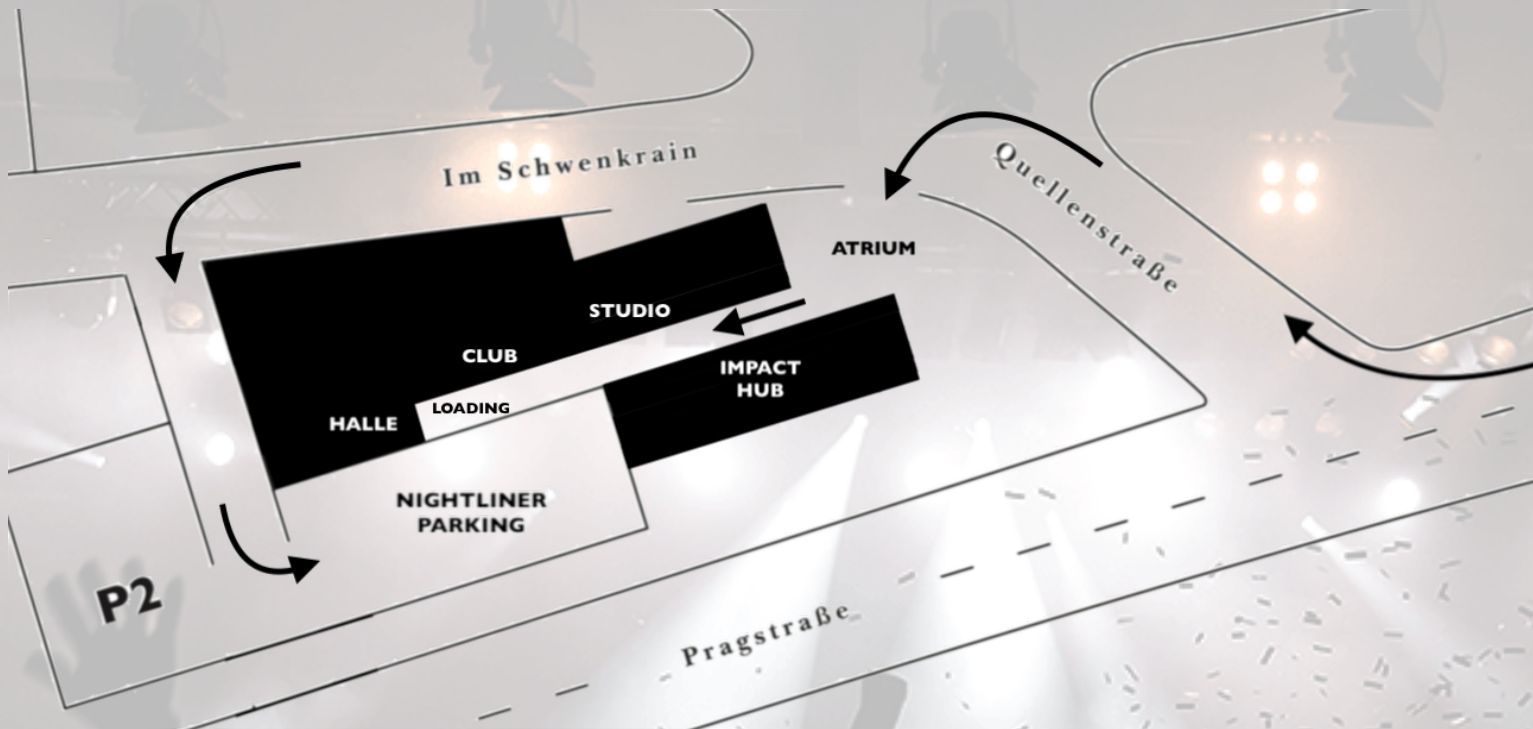


**VENUE SPECS
HALLE**

IM 
WIZEMANN
STUTTGART

Navigation: Im Wizemann
Quellenstr. 7
70376 Stuttgart

Tel: 0711 400 564 - 40
Mail: info@imwizemann.de
Web: www.imwizemann.de

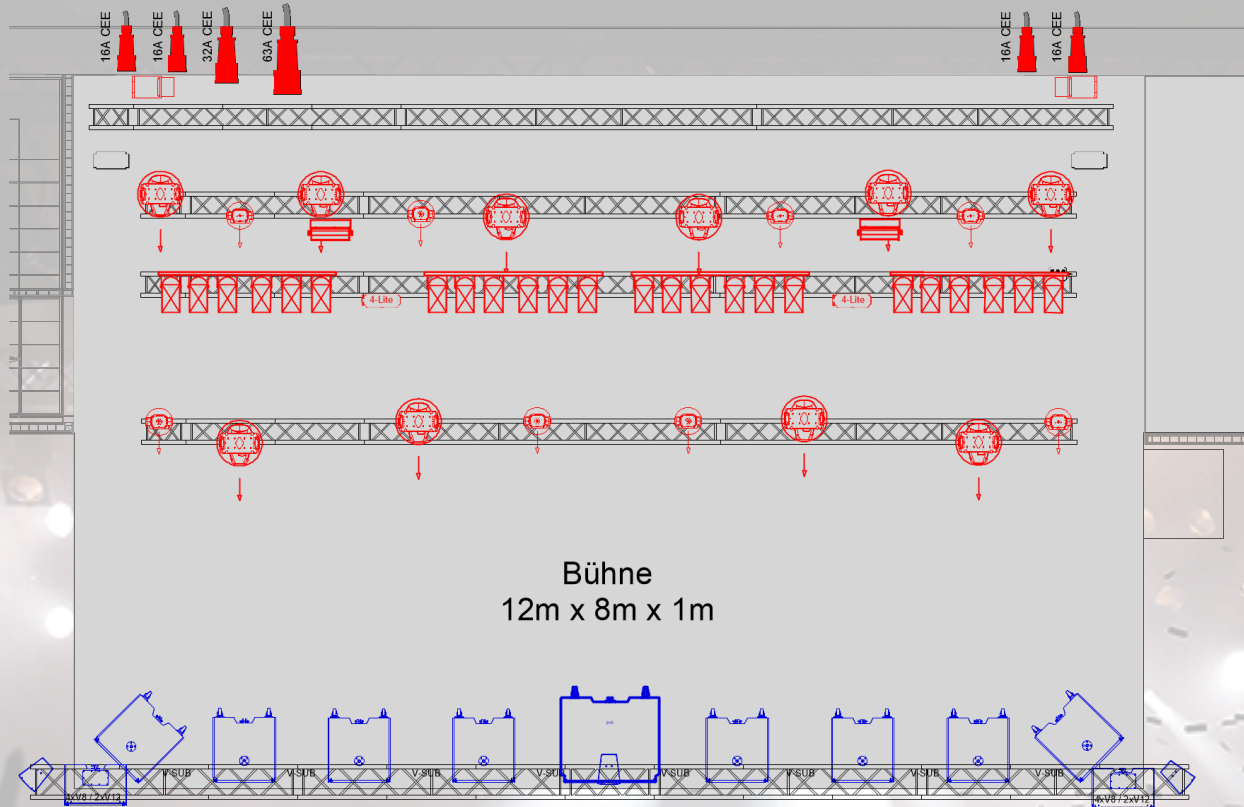


LOADING: **CAR/VAN:** You can park right next to the venue. 10m to the stage (no stairs).
NIGHTLINER: Please read the detailed parking instruction (pg. 9).

PARKING: Please use our parking lot. AC power available (2x 32A).

FOR DETAILED PARKING INSTRUCTIONS PLEASE SEE OUR PARKING SHEET! (pg. 9)

Capacity:	1300	Dressing-Rooms:	yes (2-3)
Kitchen:	no	Backstage Toilets:	yes
Bus Parking:	yes	Production Office:	yes (1)
Bus Power:	2x 32A CEE	Shower:	yes (4)
Merch Fee:	200,- EUR (+ 19% VAT)	WiFi:	yes
Washer & dryer:	please ask		



Bühne
12m x 8m x 1m

Clearance:

- Backdrop Truss 4,55m moveable
- Back Truss 4,70m moveable
- Mid Truss 2 4,70m moveable
- Mid Truss 1 4,70m moveable
- PA Truss 5,20m not moveable
- Front Truss 5,40m moveable

Legende Halle

Symbol	Beschreibung	Details
	Stufenlinse	1000W
	4-Lite Blinder	2600W
	6er-Bar	1000W CP61
	Profil Zoom	ETC S4 Zoom 15-30° 750W
	Stroboskop	Atomic 3000 LED
	LED Washer (RGB)	Martin Mac Aura XIP (Basic Mode)
	LED Spot	JB Lighting P10 HP (Mode 2)
	Hazer	JEM Hazer Pro
	Flood	LUI Sym 1kW
	LE350 Par (RGBA)	BronKobold
	d&b V8 / V12	Line Array <small>Info: Abstand PA - Delay Line 13,3m</small>
	d&b Y10	Center, Outfill, Delay <small>Info: Abstand PA - Delay Line 13,3m</small>
	8x d&b V-Sub	Cardioid Subwoofer
	1x d&b V-Infra	Infra Subwoofer
	Prolyte H30V	
	Prolyte H40V	
	Molton schwarz	



Crash Barrier

Höhe 110cm

Stage:	12m x 8m x 1m	Power Stage:	see below
Clearance:	see below	Soundcheck:	5pm (Mo-Fr)
Rigging:	no	FOH:	yes
Pyro:	no	Curfew Stage:	11pm
Side Stage:	yes (stage left + right)	Barriers:	yes

SOUNDCHECK

NO SOUNDCHECK BEFORE 5 PM (MO – FR)

DIMENSIONS LOADING DOOR

208cm x 190cm (height x wide)

BARRIERS

Crash Barriers (Mojo) vor der Bühne sind bei unbestuhlten Konzerten zwingend erforderlich (behördlich in der Baugenehmigung angeordnet).

Crash Barriers (Mojo) in front of the stage are mandatory for unseated concerts (legally arranged in the building license).

MULTICORE TO FOH

Digital:	8x AES EBU	6x CAT7 cable with CAT6a jack
Analog:	Analog 40 In / 8 Out	
Analog & Digital:	5x BNC75ohm	
DMX:	4x DMX (5-pol)	
	Houselight via 1x CAT - LUMINEX Luminode 4 - ARTNET	

SOUND LIMIT (DIN 15905-5)

Maximaler Innenschalldruck (behördlich in der Baugenehmigung angeordnet!):

Mittelungspegel LAeq = 99 dB(A)

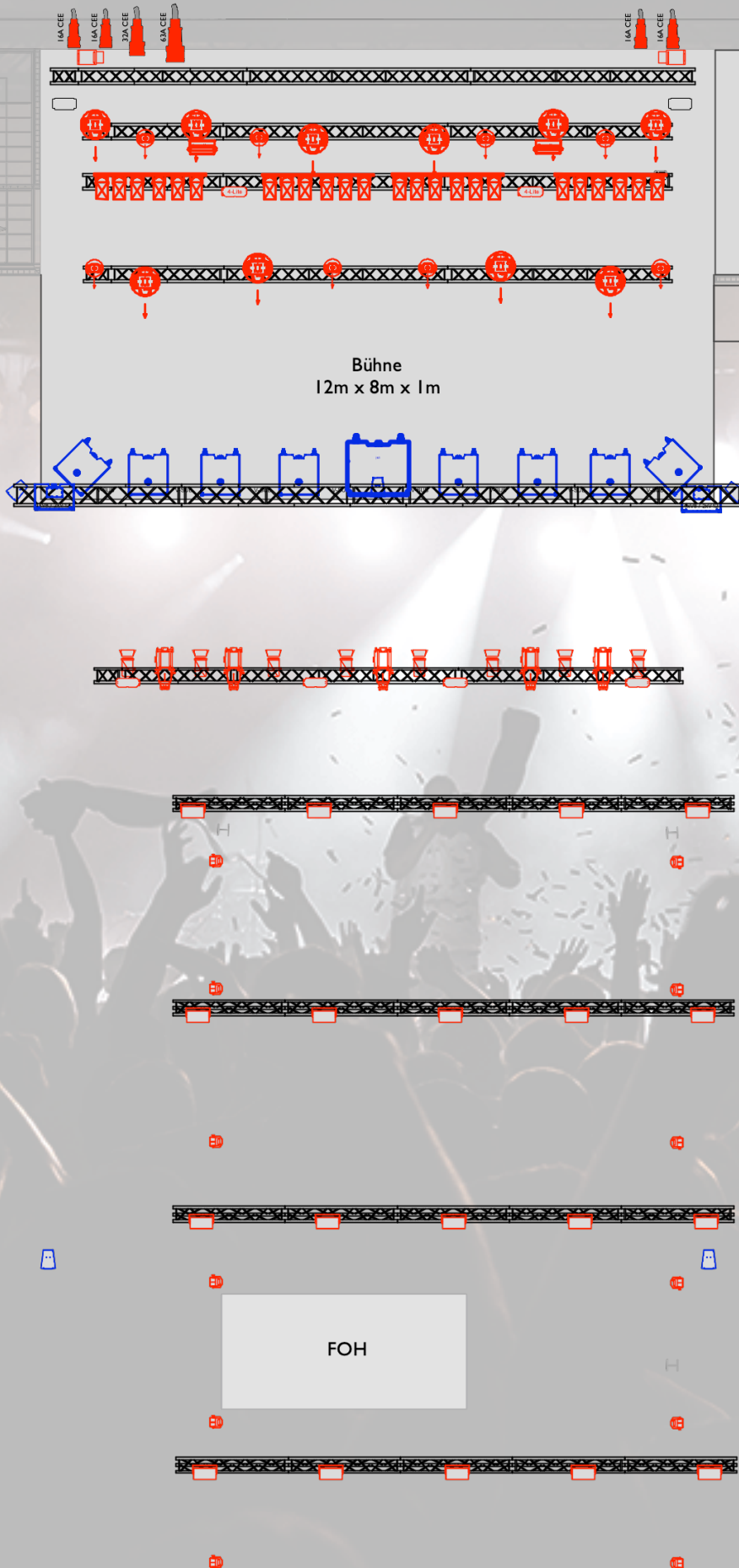
Peakwert LCPeak = 135 dB(C)

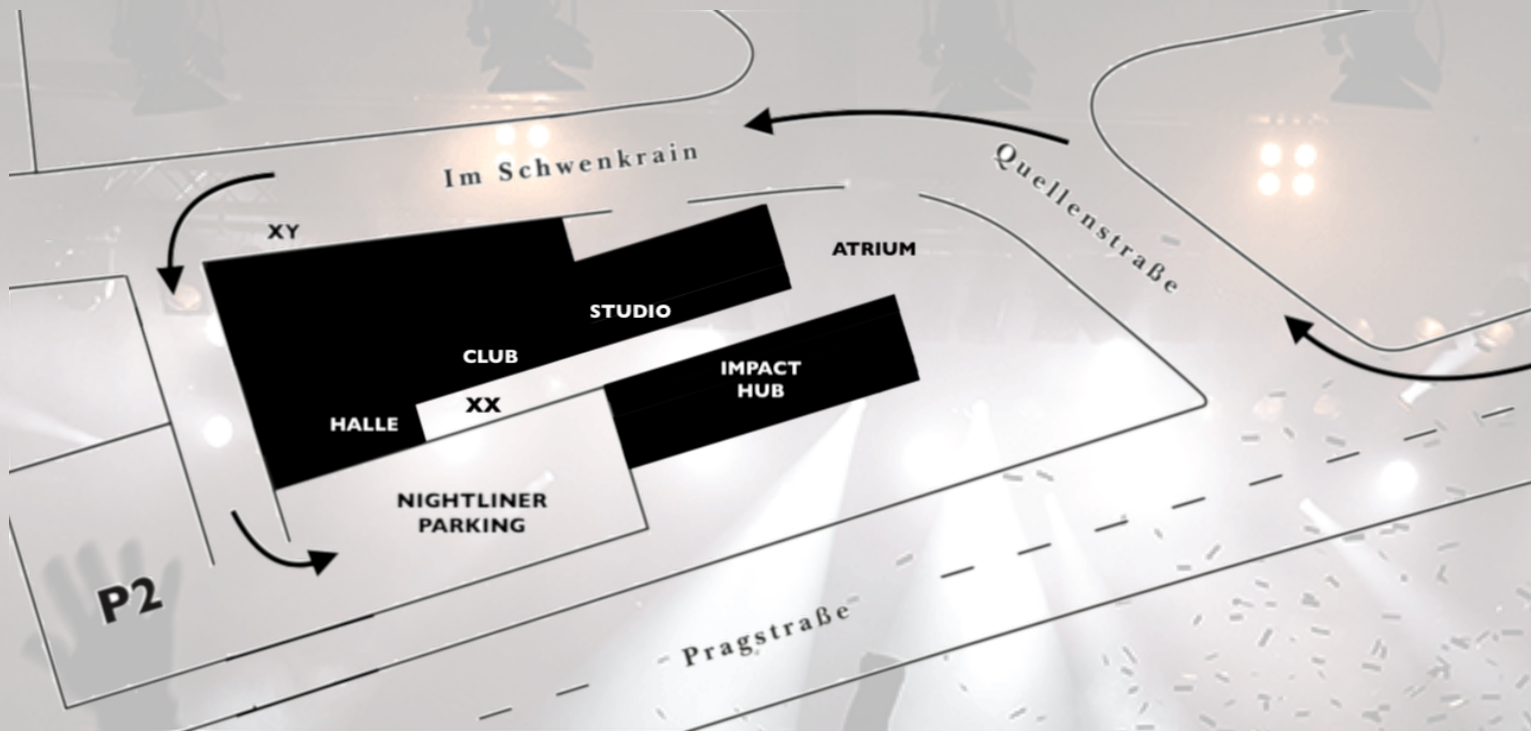
Es läuft eine dauerhafte Protokollierung der Werte. Der LAeq 99db wird über 30min gemessen.

No.	Manufacturer	Type	Description
SOUND			
Main PA			
8	d&b	V8	80° Line-Array
4	d&b	V12	120° Line-Array
8	d&b	V-Sub	Cardioid
1	d&b	J Infra	Cardioid
Outfill			
2	d&b	Y10P	110° Fullrange
Center			
2	d&b	10A-D	110° Fullrange
Delay			
2	d&b	Y10P	110° Fullrange
Controler			
4	d&b	D80	4-Channel DSP Amp
1	d&b	D40	4-Channel DSP Amp
Desk			
1	Yamaha	CL5	inkl. MY8-AE Karte
1	Yamaha	Rio 3224	32 In / 16 Out
Monitoring			
14	d&b	M4	15" LF, 1.3" HF
2	d&b	B6 Sub	2x 15"
6	d&b	D12	2-Channel DSP Amp
Micros			
7	Shure	SM58	
6	Shure	SM57	
1	Shure	Beta52	
4	Sennheiser	e904	
1	Sennheiser	e906	
3	AKG	C535	
3	Neumann	KM184	
1	Beyer Dynamic	M88	
1	Shure	Beta58	
1	Shure	Beta91	
2	Sennheiser	MD421	
6	Radial	Pro-DI Passiv	DI Box
2	Radial	JPI Duplex	DI Box
4	BSS	AR116	DI Box
DJ			
2	Technics	SL-1210 MK2	
2	Pioneer	CDJ2000 NXS	
1	Pioneer	DJM900 NXS	
4	Luke	ASB-1	Anti Shock Absorber
LIGHTING			
8	Desisti	Leonardo 1kW Fresnel	
4	Thomas	6er-Bar	
6	Thomas	4Lite Blinder	
5	ETC	S4 Zoom 15-30°	
9	JB - Lightning	P10 Profile HP	
8	Martin	MacAura XIP	
2	Martin	Atomic3000 LED	
2	Smoke Factory	Tour Hazer II	Hazer
Controler			
4	ETC	Alex M 2,5	Dimmer
2	Swisson	XSP-5	DMX Booster
Desk			
1	MA Lighting	GrandMA3 compact XT	

Fixture ID	Channel ID	Manufacturer	Fixture	Patch	Info	Position
	1	Desisti	1kW Fesnel	4.053		Frontruss
	2	Desisti	1kW Fesnel	4.054		Frontruss
	3	Desisti	1kW Fesnel	4.055		Frontruss
	4	Desisti	1kW Fesnel	4.056		Frontruss
	5	Desisti	1kW Fesnel	4.057		Frontruss
	6	Desisti	1kW Fesnel	4.058		Frontruss
	7	Desisti	1kW Fesnel	4.059		Frontruss
	8	Desisti	1kW Fesnel	4.060		Frontruss
	9	Thomas	4-Lite 1	4.061		Frontruss
	10	Thomas	4-Lite 2	4.062		Frontruss
	11	Thomas	4-Lite 3	4.062		Frontruss
	12	Thomas	4-Lite 4	4.062		Frontruss
	13	ETC	S4 Zoom 15-30°	4.065		Frontruss
	14	ETC	S4 Zoom 15-30°	4.066		Frontruss
	15	ETC	S4 Zoom 15-30°	4.067		Frontruss
	16	ETC	S4 Zoom 15-30°	4.068		Frontruss
	17	ETC	S4 Zoom 15-30°	4.069		Frontruss
	18		SPARE	4.070		Frontruss
107		JB - Lighting	P10 Profile HP	2.001	Mode 2 (60ch)	Midtruss 1
108		JB - Lighting	P10 Profile HP	2.061	Mode 2 (60ch)	Midtruss 1
109		JB - Lighting	P10 Profile HP	2.121	Mode 2 (60ch)	Midtruss 1
110		JB - Lighting	P10 Profile HP	2.181	Mode 2 (60ch)	Midtruss 1
205		Martin	MacAura XIP	2.241	Basic (36ch)	Midtruss 1
206		Martin	MacAura XIP	2.277	Basic (36ch)	Midtruss 1
207		Martin	MacAura XIP	2.313	Basic (36ch)	Midtruss 1
208		Martin	MacAura XIP	2.349	Basic (36ch)	Midtruss 1
	19	Thomas	4-Lite 5.1	4.071		Midtruss 2
	20	Thomas	4-Lite 5.2	4.072		Midtruss 2
	21	Thomas	4-Lite 6.1	4.073		Midtruss 2
	22	Thomas	4-Lite 6.2	4.074		Midtruss 2
	23		SPARE	4.075		Midtruss 2
	24		SPARE	4.076		Midtruss 2
	25	Thomas	6Bar	4.077		Midtruss 2
	26	Thomas	6Bar	4.078		Midtruss 2
	27	Thomas	6Bar	4.079		Midtruss 2
	28	Thomas	6Bar	4.080		Midtruss 2
	29	Thomas	6Bar	4.081		Midtruss 2
	30	Thomas	6Bar	4.082		Midtruss 2
	31	Thomas	6Bar	4.083		Midtruss 2
	32	Thomas	6Bar	4.084		Midtruss 2
	33	Thomas	6Bar	4.085		Midtruss 2
	34	Thomas	6Bar	4.086		Midtruss 2
	35	Thomas	6Bar	4.087		Midtruss 2
	36	Thomas	6Bar	4.088		Midtruss 2

Fixture ID	Channel ID	Manufacturer	Fixture	Patch	Info	Position
101		JB - Lighting	P10 Profile HP	1.001	Mode 2 (60ch)	Backtruss
102		JB - Lighting	P10 Profile HP	1.061	Mode 2 (60ch)	Backtruss
103		JB - Lighting	P10 Profile HP	1.121	Mode 2 (60ch)	Backtruss
104		JB - Lighting	P10 Profile HP	1.181	Mode 2 (60ch)	Backtruss
105		JB - Lighting	P10 Profile HP	1.241	Mode 2 (60ch)	Backtruss
106		JB - Lighting	P10 Profile HP	1.301	Mode 2 (60ch)	Backtruss
201		Martin	MacAura XIP	1.361	Basic (36ch)	Backtruss
202		Martin	MacAura XIP	1.397	Basic (36ch)	Backtruss
203		Martin	MacAura XIP	1.433	Basic (36ch)	Backtruss
204		Martin	MacAura XIP	1.469	Basic (36ch)	Backtruss
401		Martin	Atomic 3000 LED	1.505	Basic 4ch	Backtruss
402		Martin	Atomic 3000 LED	1.509	Basic 4ch	Backtruss
2001		JEM Hazer Pro	Martin	4.506	(3ch)	Stage left
2002		JEM Hazer Pro	Martin	4.509	(3ch)	Stage right
301		Bron Kobold	LE350	4.005	Generic RGBA (8 bit)	Ambient
302		Bron Kobold	LE350	4.009	Generic RGBA (8 bit)	Ambient
303		Bron Kobold	LE350	4.013	Generic RGBA (8 bit)	Ambient
304		Bron Kobold	LE350	4.017	Generic RGBA (8 bit)	Ambient
305		Bron Kobold	LE350	4.021	Generic RGBA (8 bit)	Ambient
306		Bron Kobold	LE350	4.025	Generic RGBA (8 bit)	Ambient
307		Bron Kobold	LE350	4.029	Generic RGBA (8 bit)	Ambient
308		Bron Kobold	LE350	4.033	Generic RGBA (8 bit)	Ambient
309		Bron Kobold	LE350	4.037	Generic RGBA (8 bit)	Ambient
310		Bron Kobold	LE350	4.041	Generic RGBA (8 bit)	Ambient
311		Bron Kobold	LE350	4.045	Generic RGBA (8 bit)	Ambient
312		Bron Kobold	LE350	4.049	Generic RGBA (8 bit)	Ambient
	101	Ultralite	Cyclo 1kW	4.089		Audience Flood
	102	Ultralite	Cyclo 1kW	4.090		Audience Flood
	103	Ultralite	Cyclo 1kW	4.091		Audience Flood
	104	Ultralite	Cyclo 1kW	4.092		Audience Flood
	105	Ultralite	Cyclo 1kW	4.093		Audience Flood
	106	Ultralite	Cyclo 1kW	4.094		Audience Flood
	107	Ultralite	Cyclo 1kW	4.095		Audience Flood
	108	Ultralite	Cyclo 1kW	4.096		Audience Flood
	109	Ultralite	Cyclo 1kW	4.097		Audience Flood
	110	Ultralite	Cyclo 1kW	4.098		Audience Flood
	111	Ultralite	Cyclo 1kW	4.099		Audience Flood
	112	Ultralite	Cyclo 1kW	4.100		Audience Flood



NIGHTLINER LOADING / PARKING

Der Trailer muss an der markierten Stelle (XY) abgehängt werden. Direkt dort befindet sich ein großer Lastenaufzug (max. 3000kg). Von dort aus sind es dann noch ca. 25-35m zur Halle oder zum Club (ebenerdig, keine Treppen). Bitte anschließend auf dem Nightliner Parkplatz parken.

You can uncouple the trailer at the marked spot (XY). There is a big elevator (max. 3000kg). Then you have to walk 25-35m to the „Halle“ or the „Club“ (no steps). Please park your nightliner at the parking lot.

LKW PARKEN / TRUCK PARKING

LKWs / Trucks können auf dem Hof stehen bleiben. Bitte rückwärts durch den Innenhof fahren und mit dem Heck an die Türe „Loading Halle“ (XX) stellen. Bitte so nah wie möglich an die Stahltreppe, damit keine Notausgänge versperrt werden.

Trucks can be parked in the atrium. Back up through the atrium and park at the loading dock „Loading Halle“ (XX). Please stand as close to the staircase as possible in order not to block any emergency exits.

ZUGANG PARKPLATZ & STROM / PARKING ACCESS & BUS POWER

Der Nightliner Parkplatz ist durch Zäune gesichert. Bitte nach der Einfahrt das Tor wieder schließen.

Nightliner Strom liegt bereit und ist ausgeschildert.

Nightliner parking is fenced. Please close the gate after entry.

Nightliner power will be available and is marked.

ZUGANG VENUE / VENUE ACCESS

Vom Nightliner Parkplatz aus führt eine Stahltreppe in den Innenhof. Von dort aus ist der Zugang ausgeschildert.

Please take the staircase to get from the nightliner parking to the Wizemann atrium. Access to the facilities will be marked.

PARKPLATZ / PARKING SPACE

Sofern ihr keine Position zugewiesen bekommt, nutzt bitte die Parkposition 1 und 2.

If you are not assigned a position, please use parking position 1 and 2.

